



SOUTHWEST BUSINESS PRODUCTS LTD.

— From Bindings to Branding —

SP1360
SP1360S
SP1360W



IntoPrint SP1360 Digital Printers

MAIPSP1360, MAIPSW1360S, MAIPSP1360W

The SP1360 is the ideal printer for specialty graphics, short run production, and creative design firms. Offering unrivaled media handling including envelopes, labels, films, and more, the SP1360 gives you the flexibility to meet your customer's ever changing needs. With the capability to print up to 360 gsm single sided, or up to 320 gsm duplexed, the SP1360 has one of the widest ranges of media selections available.



Optional Envelope Feeder

Enhance production with the DF-330 feeder using Flex Belt™ technology to eliminate skew and ensure accurate envelope delivery from start to finish.

HALIFAX NS
902.477.0382

MONTREAL QC
514.694.7741

OTTAWA ON
613.744.7004

TORONTO ON
416.285.7044

CALGARY AB
403.717.1707

VANCOUVER BC
604.574.9508



**SOUTHWEST
BUSINESS PRODUCTS LTD.**

From Bindings to Branding

IntoPrint SP1360

Digital Colour Printers

Features

SP1360 delivers vibrant, sharp image quality with resolutions up to 1200x1200—professional results at an affordable price.

Ideal as a high-performance office printer, it combines excellent image quality with fast speeds to elevate presentations and proofs.

For commercial print shops, the SP1360 is the perfect complement to a full production CMYK machine. The SP1360 adds cost-effective personalized printing on diverse media without disrupting your main production workflow.

- End user replaceable consumables ensures minimum down time
- Low total cost of ownership (TCO)
- Single pass colour technology improves colour registration for all paper types and weights
- Printer control system adjusts for sharp, clear images every time

Technical Information:

Printer Languages:

Adobe® PostScript 3™, PCL® 6, PCL 5c, XPS®

Connectivity:

High-speed USB 2.0, 10 Base-T/100 Base-TX/1000 Base-T Ethernet

Network Protocols:

TCP/IP, EtherTalk

Operating Systems:

Windows 10, Windows 8.1, Windows 8.1 x64, Windows 7, Windows 7 x64, Windows Vista, Windows Vista x64, Windows XP, Windows XP x64, Windows Server 2012 R2, Windows Server 2012, Windows Server 2008 R2, Windows Server 2008, Windows Server 2008 x64, Windows Server 2003, Windows Server 2003 x64, OS X 10.10, OS X 10.9, OS X 10.8, OS X 10.7, Mac OS X 10.6, Mac OS X 10.5, Mac OS X 10.4, Mac OS X 10.3, Mac OS 9, Linux.

Standard Colour Features/Solutions:

PostScript® driver supports trapping; Embedded ICC Profile- based workflow; Simulations for SWOP, ISO Coated, Japan Colour; PDF Direct Print; PS Gamma Adjust; and Colour Correct

SPECS

Print Speed	60 ppm COM 10 envelopes, 50ppm Letter-size sheets, 27 ppm Tabloid sheets
Time to First Page	Approx. 8 seconds
Duty Cycle	300,000 pages max per month
Print Quality	Up to 1200 x 1200 dpi; ProQ 1200 x 600 x 16 levels
Memory	2 GB RAM (Standard/Max)
Processor	1.2 GHz ARM CPU
Media Sizes	Trays 1 & 2: Up to 12" x 18" Multi-purpose Tray: Min 2.52" x 3.5" up to 13" x 52"
Media Weight	Trays 1 & 2 : 52 – 320 gsm Multi-purpose Tray: 80 – 360 gsm
Media Capacity	Trays 1 & 2: Up to 580 sheets each Multi-purpose Tray: Up to 310 sheets
Media Output	Face Down: Max 610 sheets Face Up: Max 300 sheets
Temperature	50° – 90°F (10° – 32°C)
Humidity	20% – 80%RH
Noise Levels	Printer: Active 57dBA or less; Standby 34dBA or less; PowerSave mode — Inaudible
Electrical	115V 15A Active 1600W max. / 1100W avg.
Dimensions	27.5" x 26.18" x 25.2" (699 mm x 665 mm x 640 mm)
Weight	215.2 lb. (97.6 kg) including consumables

HALIFAX NS
902.477.0382

MONTREAL QC
514.694.7741

OTTAWA ON
613.744.7004

TORONTO ON
416.285.7044

CALGARY AB
403.717.1707

VANCOUVER BC
604.574.9508



**SOUTHWEST
BUSINESS PRODUCTS LTD.**

From Bindings to Branding

IntoPrint SP1360

Digital Colour Printers



SP1360



SP1360S



SP1360W

<p>CMYK Multipurpose Printer</p>	<p>CMYK + Spot Multipurpose Printer</p>	<p>CMYK + White Multipurpose Printer</p>
<p>MAIPSP1360</p>	<p>MAIPSW1360S</p>	<p>MAIPSP1360W</p>



HCC

DF330

<p>IntoPrint HCC High Capacity Envelope Conveyor</p>	<p>IntoPrint DF-330 Laser Envelope Feeder with adjustable height stand</p>
<p>MISP1360-HC-CONV</p>	<p>MISP1360DF330</p>

HALIFAX NS
902.477.0382

MONTREAL QC
514.694.7741

OTTAWA ON
613.744.7004

TORONTO ON
416.285.7044

CALGARY AB
403.717.1707

VANCOUVER BC
604.574.9508

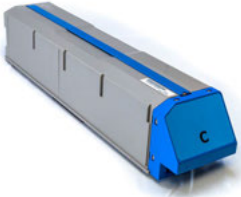


SOUTHWEST BUSINESS PRODUCTS LTD.

From Bindings to Branding

IntoPrint SP1360

Components



MISP1360-T-C
Cyan Toner



MISP1360-T-MG
Magenta Toner



MISP1360-T-YE
Yellow Toner



MISP1360-T-BK
Black Toner



MISP1360-T-WH
White Toner (SP1360W)



MISP1360-T-CL
Clear Toner (SP1360S)



MISP1360-D-CY
Cyan Drum



MISP1360-D-MG
Magenta Drum



MISP1360-D-YE
Yellow Drum



MISP1360-D-BK
Black Drum



MISP1360-D-WH
White Drum (SP1360W)



MISP1360-D-CL
Clear Drum (SP1360S)



MISP1360-WASTE
Waste Toner



MISP1360-FUSER
Fuser



MISP1360-FUSER-ENV
Fuser for oversized envelopes



MISP1360-BELT
Transfer Belt



MISP1360CABINET
Printer Cabinet



MISP1360HICAP
High Capacity 3-in-1 Tray



MISP1360-HC-CONV
HCC Envelope Conveyor



MISP1360DF330
DF-330 Laser Envelope Feeder

HALIFAX NS
902.477.0382

MONTREAL QC
514.694.7741

OTTAWA ON
613.744.7004

TORONTO ON
416.285.7044

CALGARY AB
403.717.1707

VANCOUVER BC
604.574.9508