



SOUTHWEST BUSINESS PRODUCTS LTD.

— From Bindings to Branding —



ColorMax7 Digital Colour Printer

MACOLORMAX7

The ColorMax7 digital colour printer uses the latest in inkjet technology to produce full-colour output at three times the speed of traditional shuttle head printers, at one third the per-page cost. Its Memjet® print head has 70,400 ink nozzles and no moving parts, which offers higher speeds, lower ink and maintenance costs and less noise.



Innovative Memjet® print head

The print head has no moving parts and features 70,400 colour ink nozzles, providing higher speeds, more precise printing using less ink and producing less noise than standard print heads.

HALIFAX NS
902.477.0382

MONTREAL QC
514.694.7741

OTTAWA ON
613.744.7004

TORONTO ON
416.285.7044

CALGARY AB
403.717.1707

VANCOUVER BC
604.574.9508



**SOUTHWEST
BUSINESS PRODUCTS LTD.**

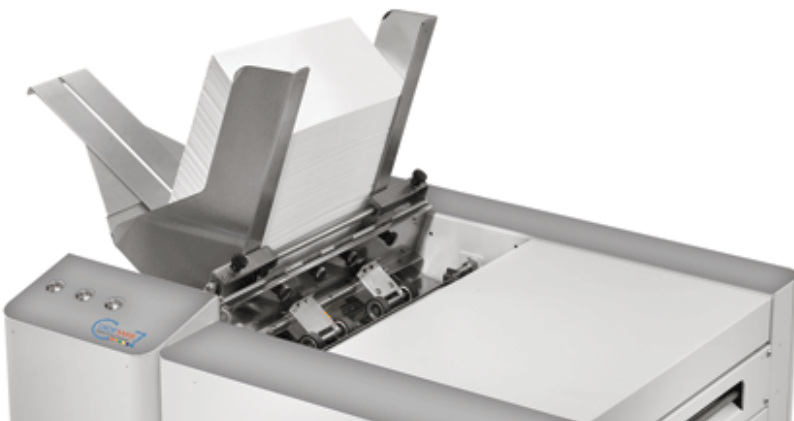
From Bindings to Branding

ColorMax7

Digital Colour Printer

Features

- High-speed colour printing for a variety of media: letterhead, invitations, postage and barcodes, windowed/non-windowed envelopes, invoices
- Full-colour inkjet with Memjet® thermal technology
- Speeds of up to 7,500 #10 envelopes per hour
- Fixed print head: a single 8.77" bar spanning the width of the printing surface
- Up to 1600 x 1600 dpi resolution
- Full-bleed capability up to 8.5" wide
- High capacity ink tanks; Cyan 250ml, Magenta 250ml, Yellow 250ml, Black 500ml
- Up to 16.8 million colours
- Built-in top-load feeder
- Pressure roller transport system with star rollers
- TruType or Postscript system fonts
- Automated print head maintenance system
- USB and ethernet PC interface
- Electronic firmware updates via PC connection



SPECS

Speed, page printing	Up to 3,600 per hour
Speed, #10 envelopes	Up to 7,500 per hour
Duty Cycle	30 million pieces or 500,000 per month over a 5-year life cycle
Material Size (W x L)	Min: 3" x 4.25" Max: 9.5" x 17"
Material Thickness	Up to 1/48"
Print Quality inches per second (ips)	Up to 1600 x 1600 dpi @ 6 ips, up to 1600 x 800 dpi @ 12 ips
Print Area	Up to 8.5" x 17" with full bleed capability
Ink Tank Capacity	Cyan, Magenta, Yellow 250ml, Black 500ml
Colour Matrix	Up to 16.8 million colours
Hardware Required	Windows-based PC, XP and newer, Java 6.0 or newer and Microsof NET Framework 3.5 must be installed on PC * Microsoft Office not supported
PC Interface	USB & Ethernet
Firmware Update	Electronic firmware update downloads via PC connection
Fonts	All available TruType or Postscript system fonts
Dimensions (L x W x H)	24" x 20" x 18" with conveyor stacker: 81" x 20" x 18"
Weight	90 lbs 169 lbs with conveyor stacker
Electrical	100VAC 60Hz / 2A

HALIFAX NS
902.477.0382

MONTREAL QC
514.694.7741

OTTAWA ON
613.744.7004

TORONTO ON
416.285.7044

CALGARY AB
403.717.1707

VANCOUVER BC
604.574.9508